

BIO
Insecticide

Velifer®



PLANTPRODUCTS



Key benefits

- Biological product based on a naturally occurring entomopathogenic fungus
- Active against all life stages of target pests
- Biological control that complements chemical solutions
- Resistance development is highly unlikely
- Favorable plant safety profile on 85 tested varieties
- Re-entry of 4 hours or until dry
- Post Harvest Interval of 0 days

Velifer®

A contact bioinsecticide that effectively reduces pest populations, Velifer® offers growers a new level of versatility for their common pest challenges. Velifer® can be used in greenhouse vegetables and ornamentals to control major pests such as aphids, thrips, whiteflies, and two-spotted spider mites.

How Velifer® works

Derived from the entomopathogenic fungus, *Beauveria bassiana* strain PPRI 5339, Velifer® can work on all life stages of the pest (eggs, larvae and other juveniles, and adults). Once applied directly to the pest target, the spores germinate on the insect cuticle and insect feeding ceases. Inside the pest, the fungi proliferate and cause dehydration, leading to insect death within 48-72 hours. Repeated applications help break the pest population cycle.

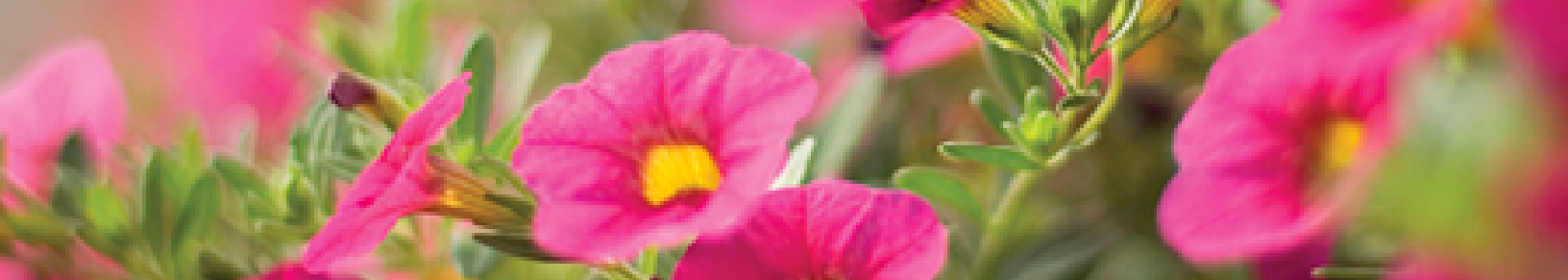
Velifer® can be stored for 1 year at room temperature (longer if kept at 4°C).



Velifer®	Format	Qty/casse
Product #: 10355	1 L	10

BASF
We create chemistry

Everything you need **to grow**

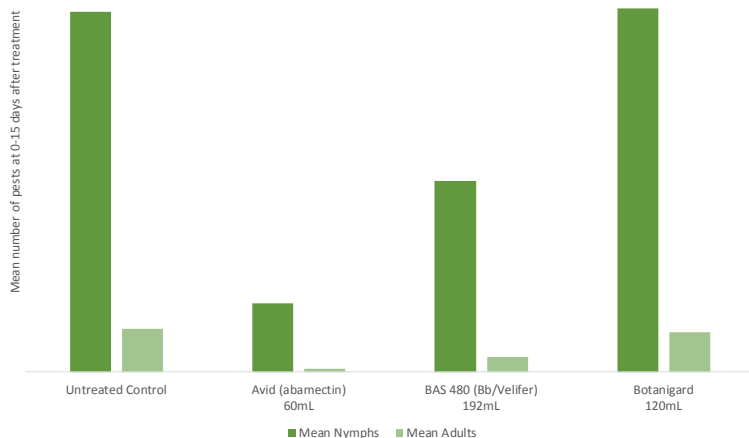


Velifer®



Infected Mite
Photo: BASF

Two-spotted Spider Mite on African Marigold



Pest: *Tetranychus urticae*

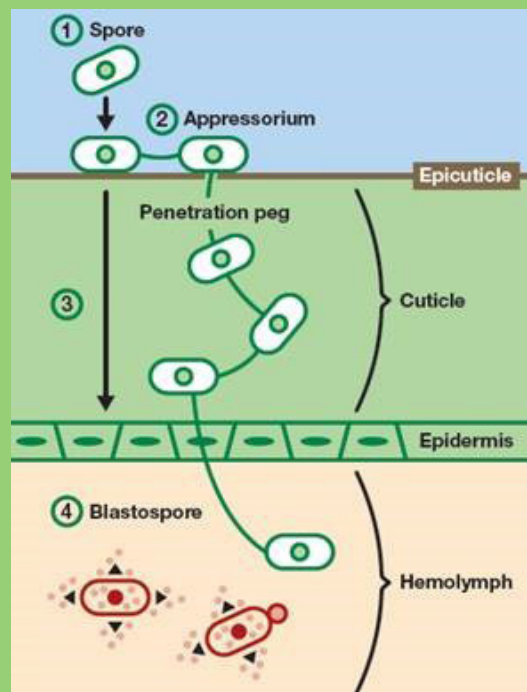
Host: *Tagetes erecta*

Trial Design: Randomized with 4 replications; two applications at 5-day intervals

Rates: All treatments shown in mL product/100L of water; 192mL/100L of BAS 480 equivalent to 960mL/1000L of formulated Velifer

How Velifer® biological insecticide works

- Velifer is a contact bioinsecticide that works to kill insects after being deposited onto the body of the target pest.
- Once applied, the fungal spores in Velifer® germinate.
- The spores then puncture the cuticle of the pest and enter into the insect's hemolymph.
- Inside the pest, the fungus proliferates, resulting in the death of the insect within 48-72 hours.



BASF
We create chemistry

Everything you need **to grow**

PlantProducts.com

519 326-9037

1 800 387-2449

1 800 361-9184

248 661-4378

50 Hazelton Street
Leamington, ON

1520 Sandhill Drive
Ancaster, ON

3370, Le Corbusier
Laval, QC

39035 Webb Drive
Westland, MI



PLANTPRODUCTS